

Model RMD-200-5-PC Software for Remote Motor Drive

With the Model RMD-200-PC software, it is now possible to control your RMD-200-x remote motor drive from your PC or MAC from outside of the treatment room, thus adding convenience and significant time saving to your monthly routine. Installation of the software is easy. Just copy the .exe file and go. The hand crank is reinstalled on the motor shaft, retaining the original manual reference point positioning and mechanical counter readout functions.

The PC or MAC computer, along with the CNMC motion control software, serves as the control/display unit. It is connected to the drive motor by a 15 meter cable via an interface unit for complete control of chamber depth from the accelerator console. The programmability of the software allows the user to preset the depth increments or the entire measurement routine. The computer display indicates the depth position, with 0.01 cm accuracy assured by optical encoder feedback.

Model RMD-200-1

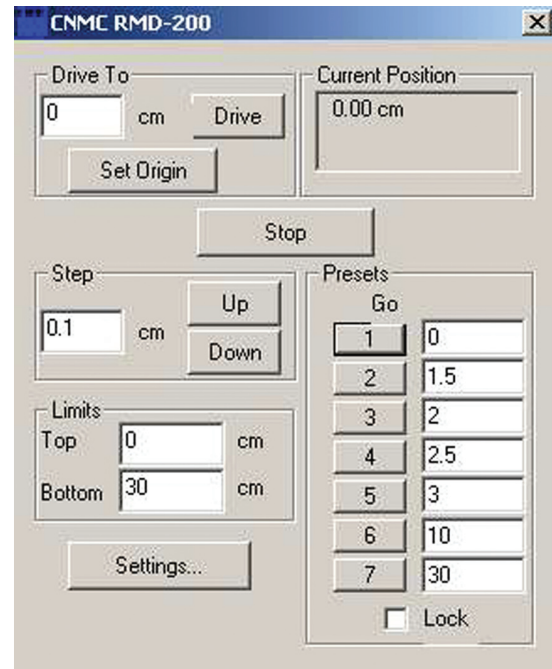
The model RMD-200-1 may be specified for adaptation to the existing MEDTEC MT-100 and MT-150 water phantoms.

Model RMD-200-3

The model RMD-200-3 may be specified for adaptation to the existing CNMC WP-300 and WP-380 water phantoms.

Model RMD-200-5

The model RMD-200-5 may be specified for adaptation to the existing CNMC WP-3040 and WP-3840 water phantoms.



Features

- Uses your computer to control the detector depth of the WP-3040 and WP-3840 water phantoms from the accelerator console
- PC and MAC versions available
- Positioning accuracy: 0.1 mm (± 0.05 mm)
- Retains the original manual positioning function

Specifications

Computer Type	PC or MAC
Operating system	PC Windows 2000 or XP
MAC	OS ver. 8.1 or later
Port	Serial (DB-9 Male) or USB to serial adapter (must be purchased separately)

SYSTEM

Interface	Custom microprocessor-based motion control
Accuracy	0.01 cm, depth displayed to 0.01 cm
Cables	Controller to interface: 15 m (50 ft) Interface to motor: 1.5 m (5 ft)
Power	120/240 VAC, 50/60 Hz, switchable
Weight	3 kg (6.6 lbs) including controller, motor assembly and cables